

VAT Most stores participate in the Value Added Tax program in which Non-European citizens may be entitled to reclaim a portion or all of the taxes paid (depending on the total purchase price). It is your responsibility to inquire as to whether or not the store participates in VAT refund program if the purchase qualifies for a refund.

Global BLUE Shop where you see this Global Blue - Tax Free Shopping sign and ask for your tax refund receipt. To qualify, there are minimum amounts, per store, per day, so please ask the retailer for details. Show your purchases and Global Blue receipts to Customs officials when leaving the EU. Have your Global checks stamped and collect your cash at the Global Blue cash refund office.



Greco Gold
Gold Street
Fira Town

KONSTANTINO™
exclusively at Greco Gold
Gold Street, Fira Town

KABANA®
Available at Zoe Jewelry
Fira Town



Look for this sign or flag in all of our preferred shops.
Beware of "similar" signs at store fronts.
If the store is not mentioned on this map, then the store is not part of our program!

PORT EXPLORER & SHOPPING MAP GUARANTEE Shop with confidence as all the merchants on our Preferred Shopping Program have been carefully selected and that each offers a 60 day guarantee to our cruise line guests. This guarantee is for repairs and exchanges. Please note the following conditions apply to the guarantee: Guest negligence or buyer's regret is excluded. Price paid for merchandise or verbal claims/agreements between merchant and guests will not be grounds for returns. Only jewelry appraisals from gem laboratories or independent graduate gemologist appraisers not affiliated with jewelry retailer, or rug appraisals from certified non-commercial carpet experts will be considered for valuation claims. Watches and other brand merchandise may not be returned as they carry International brand warranties. Guests are responsible for all postage returns and appraisal fees.

Please contact us at Europeshopping@rccl.com if any queries arise after your purchase from our preferred shops on shore. We will do our best to facilitate a solution on your behalf.



Celebrity X Cruises®



Santorini, Greece

PORT EXPLORER and SHOPPING GUIDE

GENERAL INFORMATION In 1450 BC, this volcanic island erupted forming Santorini's spectacular crescent shape. Santorini now consists of three main islands, Thira, Thirasia and Aspronisi. Originally named Thira by the Dorians, the island's name was later changed to Santorini, after St. Irene, during the 13th century Venetian settlement.

Santorini is one of the many popular islands that comprise the Cyclades; the chain of islands surrounding the once sacred island of Delos. Delos (now uninhabited) is one of the most important archaeological sites in Greece and is considered the mythological birthplace of Apollo and Artemis. This chain of islands is best known for its beaches and whitewashed cliff-top villages with stunning views. Santorini is the southernmost island of the chain and is considered to be one of the most beautiful of all the Greek islands.

The ship drops anchor off of Skala, which is 890 feet (270 m) below the small town of Firá (Thira), the island's capital. It can be reached from Skala by cable car or climbing the more than 600 steps. Firá overlooks the caldera and the island of Nea Kameni.

Devastated by an earthquake in 1956, Firá was re-built, and engraved into the volcanic cliffs with domed churches and barrel-roofed cave houses. The terraces are packed with hotels, bars and restaurants. With a population of about 2000, it is the largest community on the island.

SHORE EXCURSIONS To make the most of your visit to Fira and the island of Santorini we suggest you take one of our organized Shore Excursions. For information concerning tour content and pricing consult your Shore Excursion Brochure or contact the Shore Excursion Desk. When going ashore, be advised to take with you only necessary items and secure any valuables onboard.

LOCAL CUSTOMS Bargaining: Some shops may be prepared to bargain.

Tipping: When a service charge is not included in a restaurant bill, a 10 – 15% gratuity is suggested.

LOCAL CUISINE AND DRINK SPECIALTIES Fish and seafood feature prominently on Greek menus, as well as fruits and vegetables. In restaurants olive oil, garlic and herbs are used in traditional Greek dishes. Bread is served at every meal in Greece. The breads vary with flavorings of currants, herbs, wild greens, or cheese. Koulourákia are sweet or plain rolls, tsouréki is the festival bread loaf and paximádia is twice-baked bread, to name a few.

Traditional pseftokeftedes (meatless meatballs) are native to the island of Santorini. These are made from a batter of flour, tomato juice, grated onions, vegetables and mint. The island is also famous for its fava beans and small tasty tomatoes.

The most common drink in Greece is wine (either white or red). Greek drink specialties also include retsina (wine flavored with pine resin for improving the quality), the local spirit ouzo, and dessert wines from the north Aegean. Small cups of Greek coffee are common at breakfast. Bottled water is recommended.

LOCAL CURRENCY The unit of currency in this port of call is the euro.

POST OFFICE AND TELEPHONE FACILITIES The main post office is located in Firá.

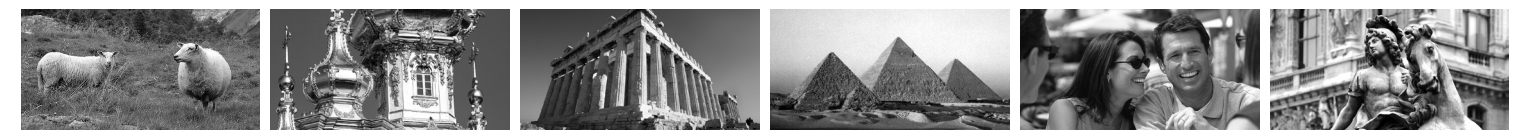
Telephone calls may be made from the O.T.E. (Greek Telecommunications Organization) office located in the center of Firá. International telephone calls can also be made from street kiosks equipped with meters and from public phonecard booths. Telephone cards can be purchased directly from kiosks and the local O.T.E office.

TRANSPORTATION Transportation on the island is limited, due to the few roads available and the limitations of automotive vehicles. There are two ways of reaching the mountain-top village of Firá, which is located 890 feet (270 m) above the Port of Skala. Guests can either climb the zig-zag series of steps, which total more than 600 steps built on an incline, or use the local cable car.

The town of Firá is pedestrian only, and guests requiring transportation will have to go to Main Square in order to catch a taxi or bus.

USEFUL WORDS AND PHRASES

- Yes • Nai
- No • Ochi
- Hello • Yeiá sas
- Good Bye • Antío
- Thank You • Efcharistó
- You're Welcome • Parakaló



The SIGHTS, SHOPPING and DINING of FIRÁ

A GRECO GOLD/KONSTANTINO BOUTIQUE

Firá Town - Gold Street

This is one of the oldest jewellery stores in Santorini. Established in 1973 by Stefanos Keramydas, it is now run by his twin sons, both GIA Graduate Gemmologists. Combining authentic Greek workmanship with original gemstones, this shop prides itself for its great customer service and past customer recommendations. They are the exclusive retailer of the famous Greek jewellery designer, Konstantino Sioulas, maker of 18K Gold and Sterling Silver jewellery inspired by the Byzantine architecture, Greek mythology and ancient Greek art.

KONSTANTINO®

B ZOE JEWELRY - Firá Town - Gold Street

A special place in the world of jewelry. Unique and different hand-crafted designs are created on site by ZOE. These prestigious jewelry pieces are a culmination of years of passion and expertise in gemstones and fine jewelry making. "ZOE Jewelry" also stocks pieces by famous Greek designers and other famous international jewelry brands such as ROBERTO COIN, KABANA, ETHO, GEO and watch brands such as ULYSSE NARDIN, ZENITH, OMEGA, LONGINES, U-BOAT. Many designs and collections are inspired by the styles of the Ancient and Byzantine Periods. High quality service, love, sincerity, honesty and hard work are the main factors behind the success of ZOE JEWELRY. Don't miss the "Welcome to Santorini shopping party with local wine and olives".

KABANA®

C DIPORTO - Firá Town

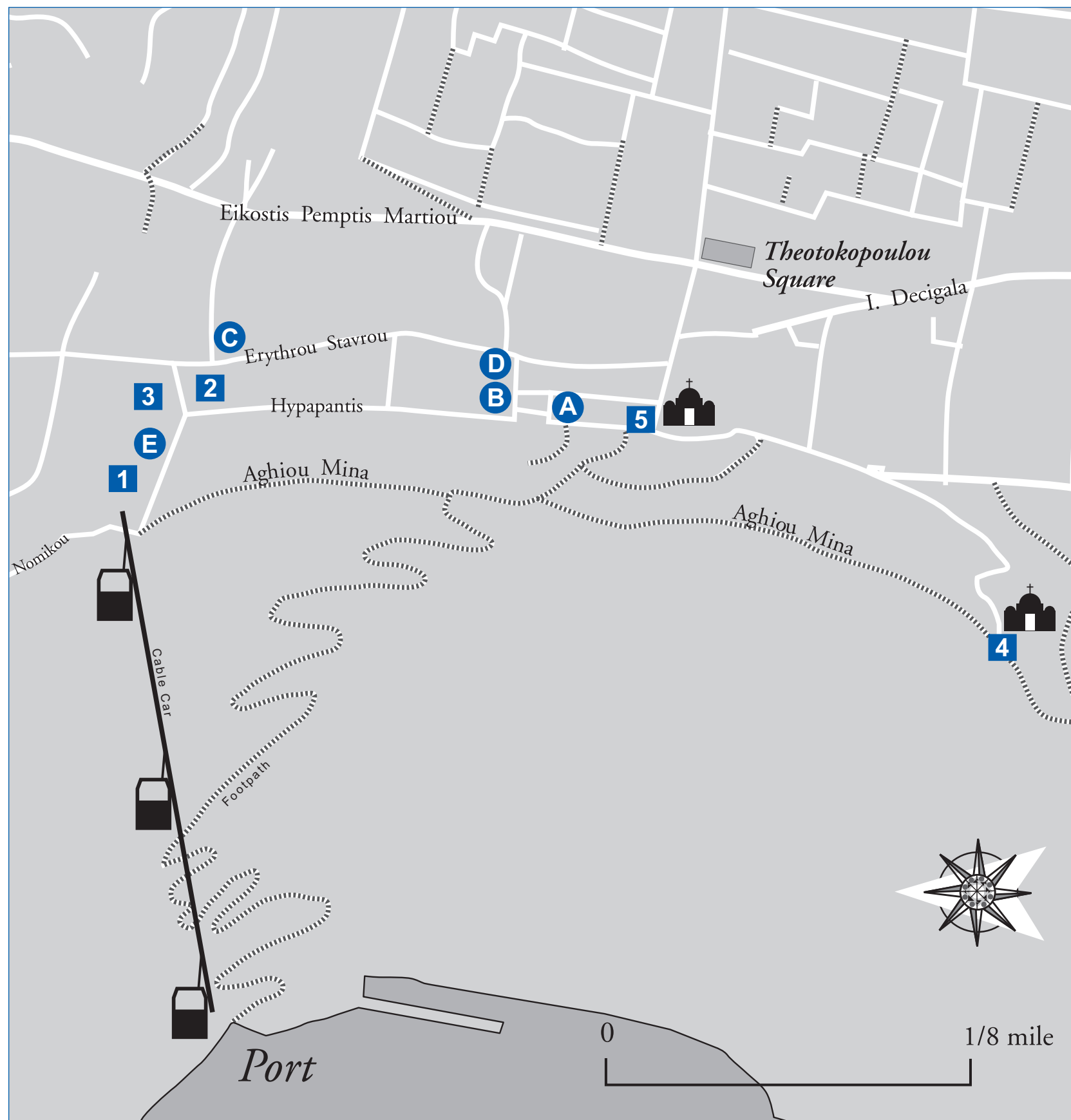
Make sure to pick up your wine and local delicacies at Diporto, "The House of Taste". Located by the cable car and museum, this shop offers a vast collection of wines, ouzos, olive oils, olives and Greek appetizers. Many other traditional items available and are packaged well for your travels. This is a great location to find those goodies for friends and family back home. Worldwide shipping available.

D KAMARI GOLD - Firá Town Near National Bank of Greece

Stop by Kamari Gold to meet Marina, Thomas and Simone, your jewelry specialists who will be sure to find something to fit every budget. They work with sterling silver, enamel, white and yellow gold. Their designs include the Greek Key; Cleopatra designed necklaces and bracelets; Byzantine inspired jewelry and baby jewelry, frames and albums. They are the authorized dealers of FESTINA watches, VISETTI stainless steel collection and LI-LA-LO jewelry.

E ZAFORA RESTAURANT Firá Town - Next to Cable Car

Set amongst a breathtaking backdrop of the Santorini Caldera, this restaurant specializes in Greek traditional cuisine. From a nice cocktail, beer, coffee or meal, their friendly staff will be sure to suggest the right dish or drink while you enjoy the vistas. Make sure to bring your camera and finish your day watching the golden sunset and a wonderful meal.



SIGHTS IN FIRÁ

- 1 The **CABLE CAR STATION** is located in Firá and connects the tender landing area of Skala to the island's capital. There is a charge for each transfer in either direction.
- 2 The **ARCHAEOLOGICAL MUSEUM** is located opposite the cable car station in Firá and is best known for its prehistoric finds. This impressive museum houses early Cycladic figurines, artifacts from Akrotiri, Mesa Vouno and artifacts from the Hellenistic and Roman eras.
- 3 The **MÉGARO GHISI MUSEUM** is located in the northern part of Firá (opposite the Archaeological Museum). It houses manuscripts from the 16th through the 19th centuries, maps, engravings, paintings and photographs of Firá before and after the 1956 earthquake. The museum is actually a restored 17th century mansion and one of the oldest buildings in Firá, complete with ancient architecture and a lavish courtyard.
- 4 **AGÍOY MINÁ** is an 18th century church, which has become the symbol of Santorini with its distinctive blue dome and white bell tower. This private church is located at the edge of Agiou Miná street facing the caldera.
- 5 The **ORTHODOX CATHEDRAL** is dedicated to Ipapantí (the Coming or Presentation of Christ in the Temple). The cathedral is also known to the locals as Our Lady Beloniá.

Beyond Firá

Ancient **THÍRA** – is approximately 6 miles (9 km) south-east of Firá. As you make your way up to the end of the Mésa Vounó peninsula 1,210 ft (370 m), you will be in the heart of the remains of the ancient inhabitants of Santorini. The ruins stand on terraces overlooking the sea.

OÍA – (pronounced EE-AH) is situated at the northern tip of the island, about 7 miles (11 km) northwest of Firá. It is a small fishing community, and is the island's third port. This town is famous for its spectacular sunsets and beautiful restored houses that were damaged after the 1956 earthquake.

ANTONIOU AND BOUTARI WINERIES – are two of the most popular wine production facilities on the island. Santorini wine is a well-known export. Both wineries are open to the public.