



Look for this sign or flag in all of our preferred shops.

Beware of "similar" signs at store fronts.

If the store is not mentioned on this map, then the store is not part of our program!

VAT Most stores participate in the Value Added Tax program in which Non-European citizens may be entitled to reclaim a portion or all of the taxes paid (depending on the total purchase price). It is your responsibility to inquire as to whether or not the store participates in VAT refund program if the purchase qualifies for a refund.

GLOBAL BLUE Shop where you see this Global Blue - Tax Free Shopping sign and ask for your tax refund receipt. To qualify, there are minimum amounts, per store, per day, so please ask the retailer for details. Show your purchases and Global Blue receipts to Customs officials when leaving the EU. Have your Global checks stamped and collect your cash at the Global Blue cash refund office.



PORT EXPLORER & SHOPPING GUIDE GUARANTEE Shop with confidence as all the merchants on our Preferred Shopping Program have been carefully selected and that each offers a 60 day guarantee to our cruise line guests. This guarantee is for repairs and exchanges. Please note the following conditions apply to the guarantee: Guest negligence or buyer's regret is excluded. Price paid for merchandise or verbal claims/agreements between merchant and guests will not be grounds for returns. Only jewelry appraisals from gem laboratories or independent graduate gemologist appraisers not affiliated with jewelry retailer, or rug appraisals from certified non-commercial carpet experts will be considered for valuation claims. Watches and other brand merchandise may not be returned as they carry International brand warranties. Guests are responsible for all postage returns and appraisal fees.

Please contact us at Europeshopping@rccl.com if any queries arise after your purchase from our preferred shops on shore. We will do our best to facilitate a solution on your behalf.

HELSINKI TOUR HIGHLIGHTS

HE07 - ARCHIPELAGO SPEED BOAT ADVENTURE On this exciting tour you begin your adventure heading towards the center of the city, past Embassy Park, Suomenlinna Island Fortress and the Open Air Market. After passing the giant Icebreakers, you will head towards the narrow straight Kustaanmiekka and then hit full throttle. Experience the scenic Finnish Archipelago at speeds up to 40 knots. After getting a taste of the speed on water, you land at one of the islands that form the Finnish Archipelago. Enjoy some refreshments, Finnish style: Fry sausages and have a taste of delicious summer food.

HE83 - HELSINKI BY ROAD & RAIL Passing the shipyard on your way to visit Sibelius Park where you can photograph the monument of over 600 steel pipes, continuing on to make a photo stop at the Olympic Stadium, pass the Uspenski Cathedral and the colorful open-air market before making a stop to visit Senate Square with the elegant Lutheran Cathedral. You will then be taken to your private tram and commence on an approximately 45 minute ride through Helsinki, pass the Hakaniemi Market as you make your way to Kallio. Pass Opera House, the Parliament House, the National Museum and Finlandia Hall. Also pass the new Contemporary Art museum, Kiasma. Your tram will turn onto Aleksanterinkatu one of Helsinki's most popular shopping areas.

HE76 - PORVOO CRUISE & HELSINKI WITH LUNCH History, culture and old world charm are revealed as you travel to the town of Porvoo. Take a cruise along the Porvoo River, enjoy a delicious lunch, and see the main sights of Helsinki. See Embassy Park, Market Square, Uspenski Orthodox Cathedral and the Presidential Palace. Continue past the New Opera House, the Olympic Stadium, Finlandia Hall, the National Museum, the Parliament House and the Contemporary Art Museum. Then travel to Porvoo where a photo stop will be made at the Old Bridge. After a guided introduction explore independently before passing along the Porvoo river boulevard to board your sightseeing boat. Cruise through parts of the Gulf of Finland.

PRIVATE CARS & VANS Why not experience the most and allow yourself to choose an itinerary geared toward your own personal interests, convenience and flexibility? For those guests who want to experience Helsinki individually or in a small group, you have the opportunity to tour the city and/or surrounding areas via a private vehicle. Vehicles with an English-speaking guide or with driver-only are offered on a half-day (4 hours) or full-day (8 hours) basis. Please consult your Port Lecturer onboard for more details.

This information has been compiled for the convenience of our guests and is intended solely for that purpose. While we work to ensure that the information contained herein is correct, we cannot accept responsibility for any changes that may have taken place since printing.

© RCCL 2012. All rights reserved.



Celebrity X Cruises®



Helsinki, Finland

PORT EXPLORER and SHOPPING GUIDE

GENERAL INFORMATION Helsinki is the capital of Finland, situated on a peninsula on the southern coast, overlooking the Gulf of Finland and the Baltic Sea. It is a predominantly modern city with a population of half a million inhabitants. Little remains of the original old town, this is largely due to the fact that the first buildings were made of wood, the domestic raw material, and over time fire and the ravages of war destroyed the wooden structures. Today Helsinki is a well planned and spacious city, with many open parks and gardens, and some fine neo-classical buildings in the Senate Square, dating from around 1840.

Surrounded by water on three sides, Helsinki has a natural seaport, which, thanks to powerful icebreakers, is kept open even in winter. Finland is the only country in Europe to have all its seaports prone to freezing. The Port was once protected by the fortifications on Suomenlinna, a group of 5 islands which are interconnected and today are used as a recreational facility. Cruise ships make an entrance and exit between the Ice Age formations of small islands, providing excellent photo opportunities from the outer decks.

Helsinki Harbor, Finland's largest, handles most of the nation's maritime trade with imports of vehicles, petroleum products and consumer goods, and exports of machinery, metal products, paper and wood. Shipbuilding of various types of vessel is a vital adjunct to the local economy and includes the largest of luxury cruise liners as well as 60% of the world's ice-breakers.

SHORE EXCURSIONS To make the most of your visit to Helsinki and its surrounding areas we suggest you take one of our organized Shore Excursions. For information concerning tour content and pricing consult your Shore Excursion Brochure or contact the Shore Excursion Desk. When going ashore, be advised to take with you only necessary items and secure any valuables onboard.

LOCAL CUSTOMS Bargaining: Prices are fixed in Finland.

Tipping: All restaurant checks include a service charge. It is not really necessary to leave an additional tip, although if preferred, it is enough to round the amount up to the nearest 5 or 10 euro.

LOCAL CUISINE AND DRINK SPECIALTIES As in other Scandinavian countries, the Smörgåsbord is most popular, a buffet with a wide range of hot and cold dishes featuring plenty of seafood, not least the Baltic herring and smoked salmon. There are a variety

of ways of serving Reindeer, one of which is cold and smoked. Bear and Elk may appear on the menu and there is also plenty of 'game'. The Finns enjoy pastries and desserts, a particular favorite being the Cloudberry, found extensively in northern Scandinavia, it is a variation of the Raspberry, slightly more tart.

Coffee is the most common beverage in Finland, although it is renowned for its Vodka. There are a number of local wines produced, made from berries and other fruits, as well as fruit liqueurs such as 'Lakka' which is made from Cloudberry. Bottled water is recommended.

LOCAL CURRENCY The unit of currency in this port of call is the euro. There are 8 euro coins denominated in 2 and 1 euros, along with 50, 20, 10, 5, 2, and 1 cent pieces. Every euro coin carries a common European face. On the obverse, each Member State decorates the coins with their own motifs. No matter which motif is on the coins they can be used anywhere inside the Member States. There are 7 euro notes. In different colors and sizes, they are denominated in 500, 200, 100, 50, 20, 10, and 5 euros. The notes are uniform throughout the euro area; unlike coins, they have no national side. All euro notes are legal tender in all countries of the euro area.

POST OFFICE AND TELEPHONE FACILITIES The main Post Office is located on Mannerheimintie 1A.

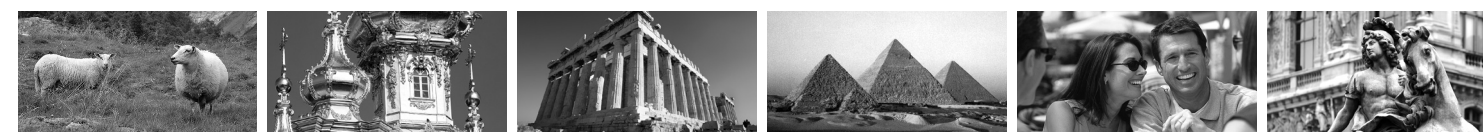
Many public phones have credit card access for international calls.

TOURIST INFORMATION The Tourist Information Office is located near the South Harbor on Pohjoisesplanadi 19 (f).

TRANSPORTATION Taxis are available at the Pier, and generally operate by meter. There is a good bus and tram system operating through-out the City.

USEFUL WORDS AND PHRASES

Yes • Kyllä
No • Ei
Good Day • Hyvää Päivää
Good-bye • Näkemiin
Thank-you • Kiitos
You're Welcome • Ole Hyvä

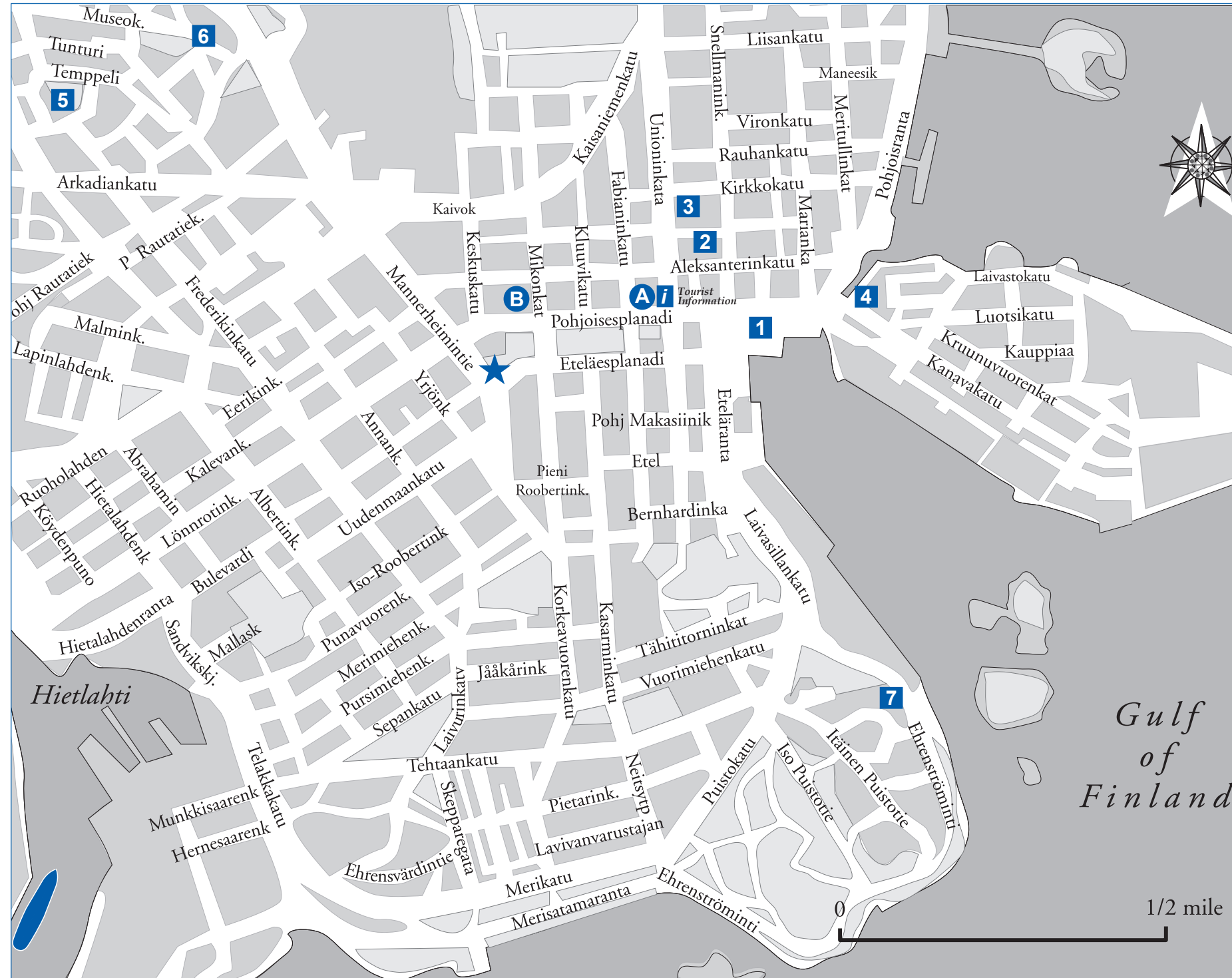


The SIGHTS and SHOPPING of HELSINKI

- 1 KAUPPATORI MARKET SQUARE**, located at the harbor end of the Esplanade, is a lively and colorful spot with everything from fruit, flowers, vegetables and freshly caught fish to local handi-crafts.
- 2 SENATE SQUARE** sits on a site that originally held 17th century buildings and is considered a masterpiece of city design and neo-classical architecture. The Government Palace, Cathedral, University buildings and Library surround the Square, while there are also boutiques and restaurants located here.
- 3 THE LUTHERAN CATHEDRAL**, stands on the northern side of the Square and was built between 1830 and 1852. It is a parish church but major State and University events take place here.
- 4 USPENSKI CATHEDRAL**, of Orthodox denomination, is situated on the far side of the Katajanokka Canal, near the South Harbor, and is dedicated to the 'Eternal Sleep of the Virgin Mary'.
- 5 TEMPELLIAUKIO CHURCH** (Rock Church) is situated at 3 Lutherinkatu. Carved out of solid rock, this unique building is one of the City's most popular tourist attractions, as well as being a working church. The dome spans 70 feet and is covered on the interior by 15 miles of Finnish copper wire.
- 6 NATIONAL MUSEUM** at Mannerheimintie 34, contains archaeological and historical exhibits, as well as an account of the history of Finland and its people.
- 7 MANNERHEIM MUSEUM** is situated in the home of the latter General Mannerheim, at Kalliolinnantie 14. He became the leader of Finland after the Civil War and is one of the country's most notable figures. The Museum contains his art treasures and collections.

Beyond Central Helsinki

SIBELIUS MONUMENT is situated in Sibelius Park on Mechelininkatu. This unusual monument was created over a period of 6 years, by sculptor Eila Hiltunen, using hundreds of steel pipes, and was dedicated in 1967 to honor the most famous Finnish composer; Jean Sibelius (1865-1957).



TAPIOLA (Forest Gods), called the Garden City of Finland, it is approximately 5 miles from Helsinki. Designed in the 1950's, it is considered a model of urban design. Built on 670 acres, it has a large range of housing, from condominiums to single family dwellings. A self-contained community with its own shops, newspapers, clubs, municipal and recreational facilities.

HVITTRÄSK is situated on Lake Hvitträsk in Espoo, 19 miles from Helsinki. Set on a wooded hillside it is the former home of the famous Finnish architects; Eliel Saarinen, Armas Lindgren and Herman Gesellius, those most responsible for creating the national romantic style in Finland.

PORVOO, 30 miles east of Helsinki, is the second oldest town in Finland, established in 1346 by King Magnus Eriksson. The old part of the town is extremely charming with quaint wooden buildings, winding cobblestone streets and narrow alleys. Porvoo Cathedral, built at the beginning of the 15th century, dominates the old town, but of particular interest is the decorative row of storehouses along the riverside, one of the most photographed tourist spots in Finland.

A ANNIKKI KARVINEN - Pohjoisesplanadi 23
 Located on the Main Shopping Street, this innovative clothing store has it all from jackets, coats, dresses, trousers, shawls, bags, formal wear and much, much more; hand-woven jackets in cotton, wool, silk and viscose; classic lines plus an international trendy collection in exquisite fabrics; Order a tailor-made outfit and have it shipped to you. All garments are 100% made in Finland. Professional and friendly staff is fluent in English.

B LAATUKORU Pohjoisesplanadi 35
 Laatukoru Helsinki offers the best international watch brands such as Zenith, Omega, Tag Heuer, Rado, Longines and Maurice Lacroix to name a few. They also have Finnish design silver and gold jewelry collections from Lumoava and Ritva-Liisa Pohjalainen. Silván jewelry is Laatukoru's own diamond jewelry brand, made in Finland. The Silván collection consists of high quality diamond rings, earrings and pendants. You can also find Swarovski and Gucci jewelry at the shop. Laatukoru offers duty free shopping, friendly and professional English and Russian speaking staff. They'll be happy to assist you when visiting Helsinki. Open: Mon. - Fri. 10:00am - 6:00pm and Sat. 10:00am - 4:00pm.



★ SHUTTLE BUS DROP-OFF