



Celebrity X Cruises®



# Florence, Pisa (Livorno), Italy

## PORT EXPLORER and SHOPPING GUIDE

<p><b>THE GOLD CORNER</b> 15 Piazza Santa Croce FLORENCE</p>	<p><b>KABANA®</b> mark henry ALEXANDRITE JEWELRY COLLECTION Both available at The Gold Corner FLORENCE</p>	<p><b>MISURI</b> 20r Piazza Santa Croce FLORENCE</p>	<p><b>GALLERIA MICHELANGELO</b> 8 Piazza Santa Croce FLORENCE</p>
<p><b>Old Florence Leather Factory</b> 14n Piazza Santa Croce FLORENCE</p>	<p><b>WHITE HOUSE</b> 9 Via Largo Piero Bargellini FLORENCE</p>	<p><b>TRADE Gold</b> Ponte Vecchio, 8/36/39/55 FLORENCE</p>	<p><b>C.O.I. JEWELLERY</b> 8n Via Por Santa Maria second floor FLORENCE</p>
<p><b>LEATHER FLORENCE</b> 4R, Piazza del Duomo FLORENCE</p>	<p><b>PIERO TUCCI</b> 17 Via Lungo L'Enza FLORENCE</p>	<p><b>Ristorante FINISTERRAE</b> 12 Piazza Santa Croce FLORENCE</p>	<p><b>CASA TOSCANA</b> 5 Via Verrazzano FLORENCE</p>
<p><b>Rubaconte</b> RISTORANTE • PIZZERIA 178r, Via Ghibellina FLORENCE</p>	<p><b>ITALIAN LOVES</b> oil and wine 4/6 Via dei Pepi FLORENCE</p>	<p><b>Il Bargello</b> 4r Piazza della Signoria FLORENCE</p>	<p><b>laRinascnte</b> Firenze, Piazza della Repubblica 1 The ultimate spot for shopping leisure. The most prestigious brands in men's and women's fashion. Cosmetics and homeware in a high class shopping experience with a perfect mix of quality and variety. The 3 floors devoted to fashion have recently been renovated and offer new possibilities for men, from formal wear to smart casual including accessories, and a full range of styles for women with perfectly edited and ultra-trendy collections. The store also boasts a scenic cafe-terrace with a magnificent view of the historical centre and a small, lovely area which hosts a food market offering a variety of Italian delicacies and traditional food. Show this map at laRinascnte store in Firenze to receive <b>10% off</b> * on your purchases. <small>* Valid except for regional restriction regulations and only on brands which support the initiative. The discount cannot be combined with other promotions. Valid until December 31st, 2012.</small></p> <p>2 340000 000234 &gt;</p>

**GENERAL INFORMATION** Livorno belongs to the region of Tuscany, which incorporates the west coast area of central Italy and includes the historic and culturally significant towns of Florence and Pisa.

The Tuscan climate is typically Mediterranean, the topography a combination of fertile valleys and sloping green hills on which Cypress trees thrive. The beauty of the countryside is featured in many paintings created by some of the most famous renaissance artists who flocked to Florence during this period.

The people of Tuscany are noted for their charm, generosity and taste for good living. They take great pride in their art and architectural treasures.

Livorno developed as a trading port during the 15th century and reflected the decline of Pisa as a result of the silting up of the River Arno. Today trade includes; timber, marble, alabaster and automobiles, as well as various craft items, most of which is derived from Florence.

Pisa is situated a little inland, approximately 12 miles from Livorno, on the banks of the River Arno. It was once a republic and city of commercial importance, and bears witness to this period with its majestic buildings and art works, the most famous being the Leaning Tower.

Florence, also found on the River Arno some 62 miles from Livorno, dates from 800 BC when a settlement was first established at a fording point on the river. Florence is a beautiful city, small and compact with narrow streets and large open squares. It is the 6th largest city in Italy, with a population of 500,000. The old quarter, with its renaissance architecture, paintings and sculptures, could almost be described as a living museum.

**SHORE EXCURSIONS** To make the most of your visit to Livorno, Pisa, and Florence we suggest you take one of our organized Shore Excursions. For information concerning tour content and pricing consult your Shore Excursion Order Form or contact the Shore Excursion Desk. When going ashore, be advised to take with you only necessary items and secure any valuables onboard.

**LOCAL CUSTOMS** Bargaining: Most items have fixed prices, but it may be possible to get a discount on a large purchase. It is normal to bargain at markets, except for food items.

**Tipping:** Generally a 15% service charge is added to restaurant bills, however, as this amount doesn't all go to the waiter, it is normal to offer a 5% tip to the waiter in addition to any service charge. For taxi drivers, a 5 – 10% tip is acceptable.

**LOCAL CUISINE AND DRINK SPECIALTIES** Pasta is most widely associated with Italian cuisine and there are many different types of pasta as well as sauces to accompany them. Try Fazzoletti, pasta filled with ricotta cheese and spinach. Some Tuscan specialties include; Ribollita, which is a variation on Minestrone, Pappardelle – broad noodles, Stracotto, a beef stew with beans, and Bistecca alla Fiorentina, a charcoal grilled T-Bone steak marinated in olive oil and black pepper.

Espresso and Capuccino coffees are very popular. It is common in Italian cafes to take a coffee standing at the bar and often there is no seating. Chianti is the most famous wine of Italy, but the region of Tuscany produces a number of very good quality wines. Bottled water is recommended.

**LOCAL CURRENCY** The unit of currency in this port of call is the euro.

**POST OFFICE AND TELEPHONE FACILITIES** The Post Office is located on Via Cairoli in Livorno.

There is a facility for making international telephone calls at the Post Office. Most public telephones take local coins and/or telephone cards which can be purchased at the Post Office or Tobacconists.

**TOURIST INFORMATION** The Municipal Tourist Office in Florence is located on Borgo Santa Croce. There is a Tourist Information Office in Piazza della Signoria, Florence.

In Livorno, the Tourist Information Office is located in Piazza Cavour.

**TRANSPORTATION** There are a few taxis available at the pier, however, most prefer to accept full-day fares to Pisa or Florence. It is important to negotiate a fare before departing. Some taxi drivers may accept U.S. Dollars.

The train station is located approximately 3 miles from the Ship's berth. The ancient and historic city of Florence is closed to most automobile traffic. It is suggested to wear comfortable walking shoes when entering Florence as the great majority of sightseeing must be done by foot.

### USEFUL WORDS AND PHRASES

- Yes • Si
- No • No
- Good Day • Buon Giorno
- Good-bye • Arrivederci
- Thank-you • Grazie
- You're Welcome • Prego

**Look for this sign or flag in all of our preferred shops.**

**Beware of "similar" signs at store fronts.**

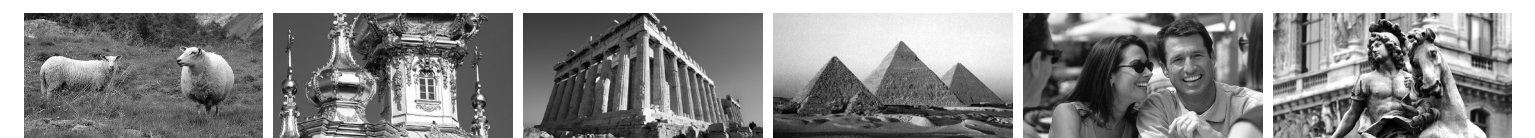
**If the store is not mentioned on this map, then the store is not part of our program!**

**VAT** Most stores participate in the Value Added Tax program in which Non-European citizens may be entitled to reclaim a portion or all of the taxes paid (depending on the total purchase price). It is your responsibility to inquire as to whether or not the store participates in VAT refund program if the purchase qualifies for a refund.

**GLOBAL BLUE** Shop where you see this Global Blue - Tax Free Shopping sign and ask for your tax refund receipt. To qualify, there are minimum amounts, per store, per day, so please ask the retailer for details. Show your purchases and Global Blue receipts to Customs officials when leaving the EU. Have your Global checks stamped and collect your cash at the Global Blue cash refund office.

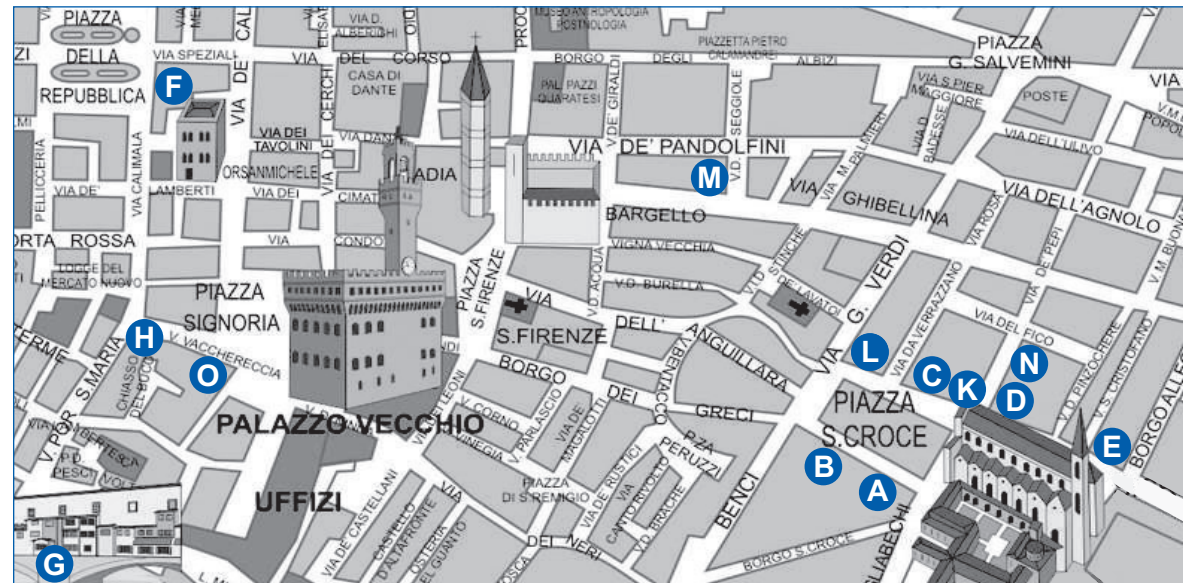
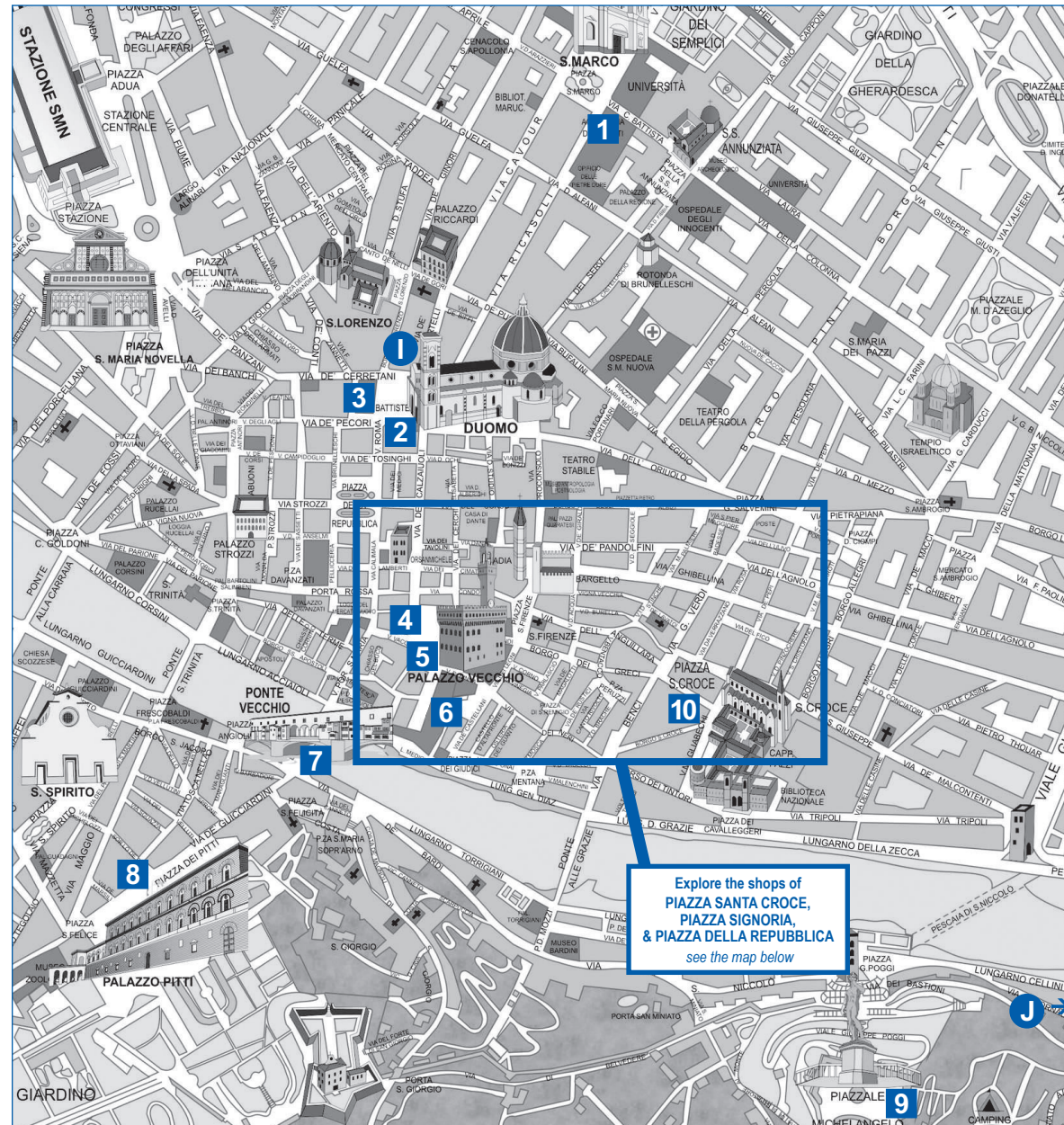
**PORT EXPLORER & SHOPPING MAP GUARANTEE** Shop with confidence as all the merchants on our Preferred Shopping Program have been carefully selected and that each offers a 60 day guarantee to our cruise line guests. This guarantee is for repairs and exchanges. Please note the following conditions apply to the guarantee: Guest negligence or buyer's regret is excluded. Price paid for merchandise or verbal claims/agreements between merchant and guests will not be grounds for returns. Only jewelry appraisals from gem laboratories or independent graduate gemologist appraisers not affiliated with jewelry retailer, or rug appraisals from certified non-commercial carpet experts will be considered for valuation claims. Watches and other brand merchandise may not be returned as they carry International brand warranties. Guests are responsible for all postage returns and appraisal fees.

Please contact us at [Europeshopping@rccl.com](mailto:Europeshopping@rccl.com) if any queries arise after your purchase from our preferred shops on shore. We will do our best to facilitate a solution on your behalf.



# The SIGHTS, SHOPPING and DINING of FLORENCE

- 1 ACCADEMIA GALLERY** can be found on Via Ricasoli and contains some of Michelangelo's most important sculptures, including the statue of David.
- 2 CATHEDRAL OF SANTA MARIA DEL FIORE** is the second largest cathedral in the world, capable of holding 3,000 people. Begun in 1296, it took 140 years to complete.
- 3 BAPTISTRY**, an octagonal structure built in the 11th century, it contains many mosaics dating from the 13th and 14th centuries. It is famous for its three bronze gates on the east-side, designed by Ghiberti and known as the "Gates of Paradise".
- 4 PIAZZA DELLA SIGNORIA** is the City's largest square and represents the historical and commercial center. The Neptune Fountain can be found here, and the sidewalk cafes attract Florentines and tourists alike.
- 5 PALAZZO DELLA SIGNORIA** (Palazzo Vecchio) dominates the Piazza, with a copy of Michelangelo's statue of David adorning the stairway. Completed in 1314, the Palace later became the seat of the City's Government.
- 6 UFFIZI GALLERY**, located just off Piazza della Signoria, once the administrative offices of the Medici rule, it now contains works of art by such famous masters as; Giotto, Botticelli, Leonardo Da Vinci, Michelangelo, Raphael and Rubens.
- 7 PONTE VECCHIO** is the oldest bridge remaining in Florence, and today is lined with goldsmiths' shops.
- 8 PITTI PALACE** was once the Grand Ducal and Medici residence and the Royal Palace of united Italy from 1865 – 1870, when Florence enjoyed brief recognition as the country's capital city.
- 9 MICHELANGELO SQUARE**, is famous for its view overlooking Florence.
- 10 SANTA CROCE**, located on Piazza Santa Croce, was begun in 1294 and built in gothic style. It now contains the tombs of some of Italy's greatest citizens including; Michelangelo, Galileo, Ghiberti and Machiavelli.



**A THE GOLD CORNER - 15 Piazza Santa Croce**  
Gold Corner has the city's largest selection of 18kt gold and silver jewelry sold-by-weight. We also have an impressive collection of original roman coins. Gold Corner carries exclusive designers such as Fope, Kabana, Nanis, Mark Henry Alexander, Meli Gioielli Mosaico, Nomination and Pandora. We have a new diamond cut collection which includes black & chocolate gold plus our new designs with black & white diamonds. Cash customers receive a 25% discount and credit card customers receive a 20% discount. Non-EU citizens receive 12% tax free.



**B MISURI - 20 Piazza Santa Croce**  
Located in a 15th century palace overlooking the historic Piazza di Santa Croce, the friendly, multi-lingual staff of Misuri is pleased to offer you Italian leather of the finest design and quality. Together with your free initials in 22kt gold, Misuri is also proud of their competitive prices and customer service. They also provide a tax refund, international shipping and money exchange.



**C GALLERIA MICHELANGELO - 8 Piazza Santa Croce**  
Visit the Galleria Michelangelo and watch as our skilled artisans create the ultimate fashion collection of leather handbags, jackets, briefcases, luggage, boots, sandals and moccasins. We also have gold jewelry designed by Chimento, Rebecca, Mosaic, Diamond-Cut and Cameos. We offer tax refunds, international warranties and dependable shipping. Au Soleil can also be found at this store. These fashionable designs change colors in the sunlight. They were specifically designed in Italy and feature the country's most beautiful destinations. You'll be able to find unique t-shirts and accessories to remember your trip to Italy.



**D OLD FLORENCE LEATHER FACTORY - 14 Piazza Santa Croce**  
For more than 30 years our friendly, multi-lingual staff has helped customers select from the finest quality leather products, handmade by the most talented Florentine artisans. We carry a wide selection of exceptional leather belts, wallets, handbags and souvenirs. We take pride in our superior customer service while offering complimentary 22kt gold branded initials and an immediate in-store tax-refund.



**E WHITE HOUSE - 9 Via Largo Piero Bargellini**  
A leader in the leather clothing and accessories industry. Our master craftsmen carefully machine only the highest quality leather. All of our products are manufactured and hand-colored using the time-honored and traditional techniques of Florentine artisans.



**F LA RINASCENTE - 1 Piazza della Repubblica**  
The Rinascente Department Store offers a perfect mix of quality and variety. This is the ultimate stop for leisurely shopping. We carry thousands of the most prestigious brand-names in men's and women's fashion, accessories, undergarments, cosmetics and housewares. The newly renovated three floors of fashion include a full range of styles from ultra-hip to smart casual and elegantly formal. Take a break from shopping at our beautiful terrace café and enjoy a magnificent view overlooking the historic center of Florence. Bring this map and ask about current discounts.



**G TRADE GOLD Ponte Vecchio, 39/r**  
**S.A.D.A. GOLD Ponte Vecchio, 55/r**  
**ART GOLD Ponte Vecchio, 36/r**  
**GGOLD Ponte Vecchio, 8/r**  
These jewelry stores are located in the heart of Ponte Vecchio (Old Bridge), the Florence's gold center and one of the most beautiful historic sites in the world, and are the result of the collaboration of historical families of Master Jewelers with centuries of experience in hand-making prestigious jewels. Each of them offer a line of jewelry that is timeless, maintaining intact the high standards of the Italian goldsmith's tradition and Florentine handicrafts, without losing sight of the evolution of style.



**H C.O.I. JEWELLERY - 8n Via por Santa Maria (2nd floor)**  
For 60 years C.O.I. has been synonymous with excellence in jewelry making. Our master goldsmiths specialize in creating marvelous pieces in 18kt gold while upholding the tradition of unsurpassed Florentine craftsmanship. We are distributors for NANIS and FOPE and exclusive distributors for MARCO BICEGO. Our staff will be happy to assist you in selecting from a wide range of unique jewels and souvenirs. Bring this map to receive a special 20% discount.



**I LEATHER FLORENCE - 4R, Piazza del Duomo**  
The White House Group is one of the leading companies in the leather clothing and accessories industry. Our products are all made from the highest quality leather and machined with care. All the leathers used in our products are created using the traditional techniques and craftsmanship of Florence along with hand dying.



**J PIERO TUCCI - 17 Via Lungo L'Ema**  
The only leather shop in Florence located inside its own leather factory. We offer guided tours which give visitors the opportunity to watch our talented artisans create a wide selection of quality Italian leather bags, wallets, jackets and accessories. To easily reach "Pierotucci" we are happy to provide our customers a convenient and comfortable shuttle bus service for the short 15 minute drive from the center of the city.



**K RISTORANTE FINISTERRAE - 12 Piazza Santa Croce**  
Located on one of the most beautiful squares in Italy. Sit inside in fully air conditioned comfort or relax outside on our terrace. Either way you will enjoy a real Italian pizza, made to order. We also offer a great selection of pasta dishes, fresh salads and wines. Complete your meal with a cappuccino and desert by selecting from our home-made tiramisu or Italian gelato ice cream.



**L CUCINA TOSCANA - 5 Via Verrazzano**  
Welcome to "Casa Toscana". In a cozy and historic Florentine environment on the corner of Santa Croce square enjoy typically Tuscan recipes of lasagne, traditional pastas, local cheeses and salami.



**M RESTAURANT & PIZZERIA RUBACONTE 178r, Via Ghibellina**  
This restaurant offers a wide range of traditional Florentine and Tuscan cuisine from their own pasta and pastries, synonymous with freshness and quality. Homemade pasta, traditional T-Bone steaks, pizzas and Tuscan ribollita are just a few of the dishes offered by the chef.



**N ITALIAN LOVES OIL AND WINE - 4/6 Via dei Pepi**  
Come join our friendly, professional, multilingual staff for a free tasting of wine, limoncello, extra virgin olive oil and balsamic vinegar. Be sure to try the Chianti Classico and Brunello Di Montalcino wines. Our winery also offers a wonderful selection of hand-made Florentine ceramics. If you would like to ship any purchase home we offer the best rates in town. When facing the Basilica di Santa Croce (Church of the Holy Cross), at the statue of Dante turn left onto Via de' Pepi. Look for the green flag just 50 feet away!



**O IL BARGELLO - 4 Piazza della Signoria**  
Il Bargello is one of the oldest restaurants in Florence and has been serving wonderful Tuscan cuisine for hundreds of years. On our terrace overlooking the Piazza della Signoria and the beautiful Palazzo Vecchio or in the air-conditioned comfort of our dining room, join us for lunch, dinner or a relaxing afternoon cocktail.

